

SECTION CORNER - O.D.O.T. D-22-506  
 FOUND AND ACCEPTED A #3 BAR WITH "RLS 864" CAP.  
 LOCATION IS IN AGREEMENT WITH OKLAHOMA CERTIFIED  
 CORNER RECORDS FILED IN 2010 AND 2000 AND IS IN  
 HARMONY WITH EXISTING IMPROVEMENTS. THE  
 REFERENCE MONUMENTS WERE FOUND AND VERIFIED.

SECTION CORNER - O.D.O.T. D-22-507  
 FOUND AND ACCEPTED A #3 BAR. LOCATION IS IN  
 AGREEMENT WITH OKLAHOMA CERTIFIED CORNER  
 RECORDS FILED IN 2010 AND 2000 AND IS IN  
 HARMONY WITH EXISTING IMPROVEMENTS. THE  
 REFERENCE MONUMENTS WERE FOUND AND VERIFIED.

SECTION CORNER - O.D.O.T. D-22-508  
 SET A #4 BAR WITH "CA 2054" CAP FOR CORNER.  
 LOCATION WAS RE-ESTABLISHED BY USING EXISTING  
 HIGHWAY PLANS AND SPLITTING FENCES RUNNING EAST  
 WEST. ALSO FOUND A #4 BAR WITH "CA 980" CAP  
 REFERENCED IN OKLAHOMA CERTIFIED CORNER RECORDS  
 FILED IN 2004 BUT DID NOT ACCEPT THIS LOCATION  
 BECAUSE IT DID NOT FIT EXISTING HIGHWAY PLANS.

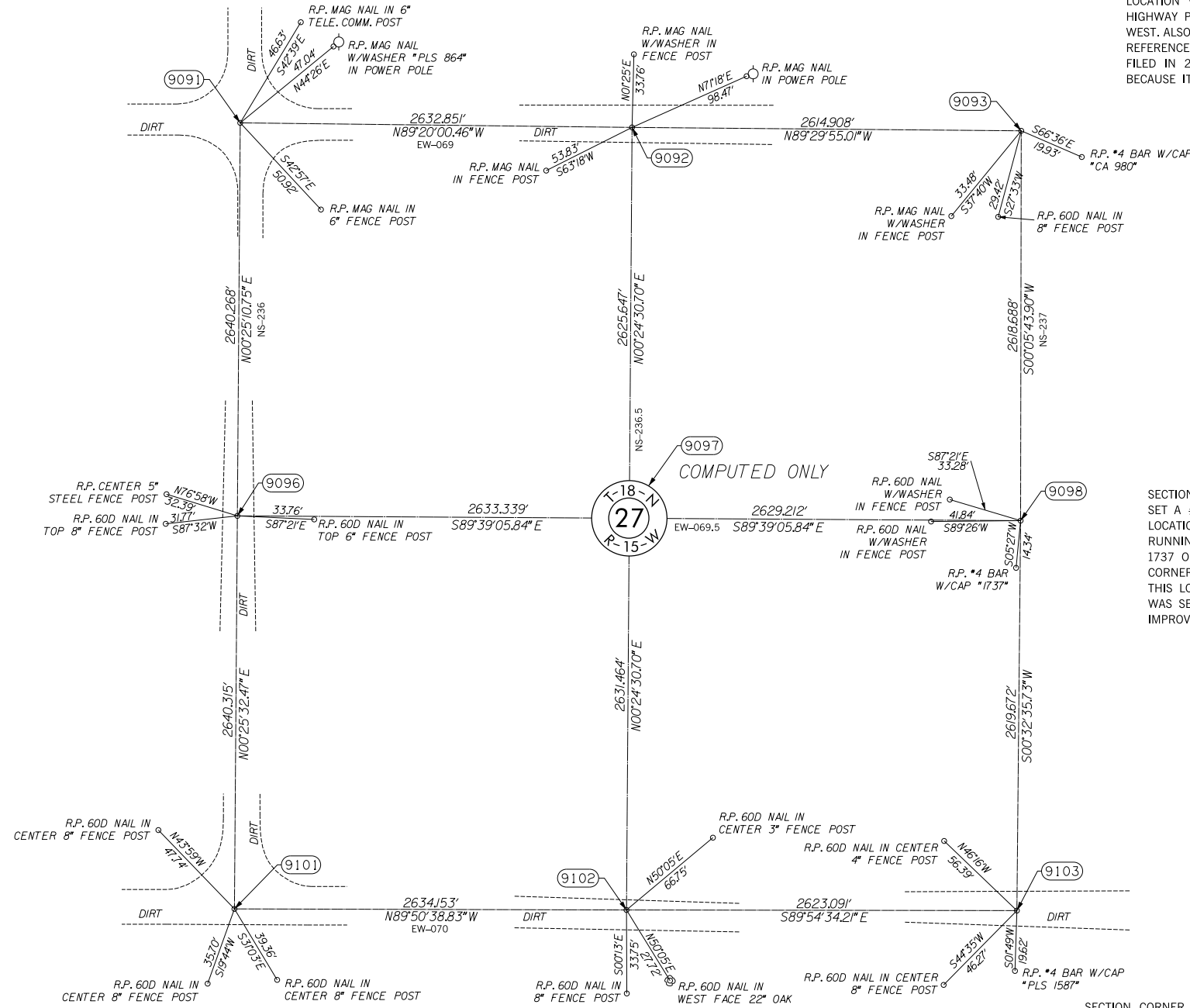
SECTION CORNER - O.D.O.T. D-22-511  
 FOUND AND ACCEPTED A #4 BAR. LOCATION IS IN  
 AGREEMENT WITH EXISTING IMPROVEMENTS. NO OKLA  
 HOMA CERTIFIED CORNER RECORDS WAS ON FILE FOR  
 THIS LOCATION.

SECTION CORNER - O.D.O.T. D-22-512  
 SET A #4 BAR WITH \*CA 2054\*CAP FOR CORNER.  
 LOCATION WAS RE-ESTABLISHED USING A FENCE LINE  
 RUNNING EAST WEST. ALSO FOUND A #4 BAR WITH "  
 1737 OK" CAP REFERENCED IN OKLAHOMA CERTIFIED  
 CORNER RECORDS FILED IN 2010 BUT DID NOT ACCEPT  
 THIS LOCATION BECAUSE THE METHOD IN WHICH IT  
 WAS SET AND IT DID NOT FIT SURROUNDING  
 IMPROVEMENTS.

SECTION CORNER - O.D.O.T. D-22-514  
 SET A #4 BAR WITH "CA 2054" CAP FOR CORNER.  
 LOCATION WAS RE-ESTABLISHED TO BE IN AGREEMENT  
 WITH EXISTING IMPROVEMENTS. NO OKLAHOMA  
 CERTIFIED CORNER RECORDS WAS ON FILE FOR THIS  
 LOCATION.

SECTION CORNER - O.D.O.T. D-22-515  
 FOUND AND ACCEPTED A BENT 60D NAIL. LOCATION IS  
 IN AGREEMENT WITH EXISTING IMPROVEMENTS. NO OKLA  
 HOMA CERTIFIED CORNER RECORDS WAS ON FILE FOR  
 THIS LOCATION.

SECTION CORNER - O.D.O.T. D-22-516  
 SET A #4 BAR WITH \*CA 2054\* CAP FOR CORNER.  
 LOCATION WAS RE-ESTABLISHED BY SPLITTING FENCE  
 LINES RUNNING EAST WEST. ALSO FOUND A #4 BAR  
 WITH A "PLS 1587" CAP BUT DID NOT ACCEPT THIS  
 LOCATION BECAUSE IT DID NOT FIT SURROUNDING  
 IMPROVEMENTS. NO OKLAHOMA CERTIFIED CORNER  
 RECORDS WAS ON FILE FOR THIS LOCATION.



SCALE:  
 1" = 500'

NOTE: REFERENCE'S SHOWN ARE NOT TO SCALE.

OKLAHOMA DEPARTMENT OF TRANSPORTATION SURVEY DIVISION			
PLS	KH		
DRAWN	CF,SK		
CHECKED	KH		
APPROVED	KH		
CREW	JH,SA,BH,DR	SWO 4600 (1)	PROJECT NO. 17671(34) SHEET NO. S39

**SURVEY DATA SHEET**